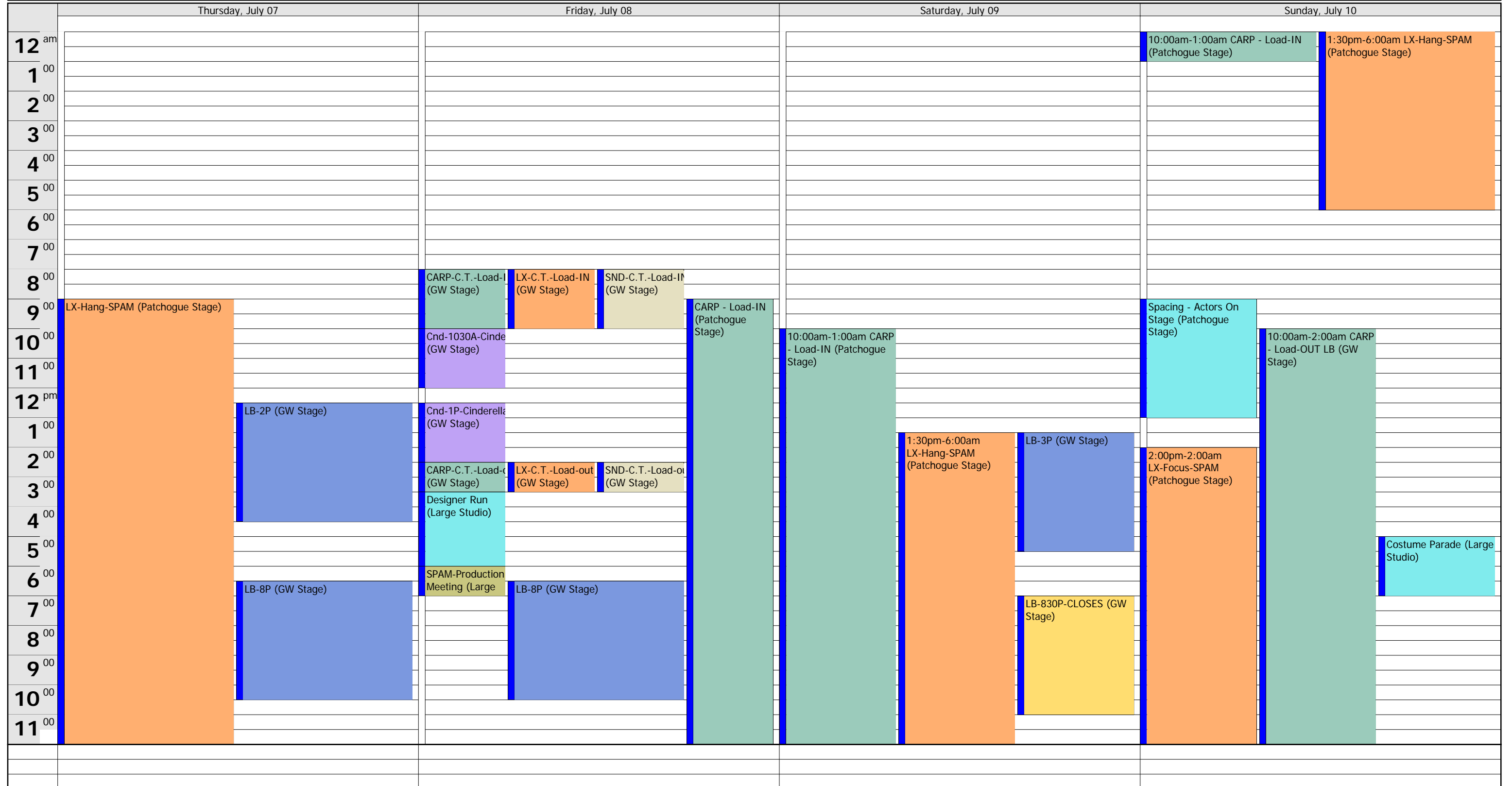


# July 04 - July 10

|                  | Monday, July 04<br>CREW DAY OFF | Tuesday, July 05 | Wednesday, July 06                          |
|------------------|---------------------------------|------------------|---|
| 12 <sup>am</sup> |                                 |                  |   |
| 1 <sup>00</sup>  |                                 |                  |   |
| 2 <sup>00</sup>  |                                 |                  |   |
| 3 <sup>00</sup>  |                                 |                  |   |
| 4 <sup>00</sup>  |                                 |                  |   |
| 5 <sup>00</sup>  |                                 |                  |   |
| 6 <sup>00</sup>  |                                 |                  |   |
| 7 <sup>00</sup>  |                                 |                  |   |
| 8 <sup>00</sup>  |                                 |                  |   |
| 9 <sup>00</sup>  |                                 |                  | Patchogue Preliminary Day (Patchogue Stage) |
| 10 <sup>00</sup> |                                 |                  | Preliminary Day (Patchogue Stage)           |
| 11 <sup>00</sup> |                                 |                  | Pit Plug+Preliminary Day (Patchogue Stage)  |
| 12 <sup>pm</sup> |                                 |                  |   |
| 1 <sup>00</sup>  |                                 |                  | Spamalot Production Meeting (KeyWest)       |
| 2 <sup>00</sup>  |                                 |                  |   |
| 3 <sup>00</sup>  |                                 |                  |   |
| 4 <sup>00</sup>  |                                 |                  |   |
| 5 <sup>00</sup>  |                                 |                  |   |
| 6 <sup>00</sup>  |                                 |                  |   |
| 7 <sup>00</sup>  |                                 | LB-8P (GW Stage) | LB-2P (GW Stage)                            |
| 8 <sup>00</sup>  |                                 |                  |   |
| 9 <sup>00</sup>  |                                 |                  |   |
| 10 <sup>00</sup> |                                 |                  | LB-8P (GW Stage)                            |
| 11 <sup>00</sup> |                                 |                  |   |

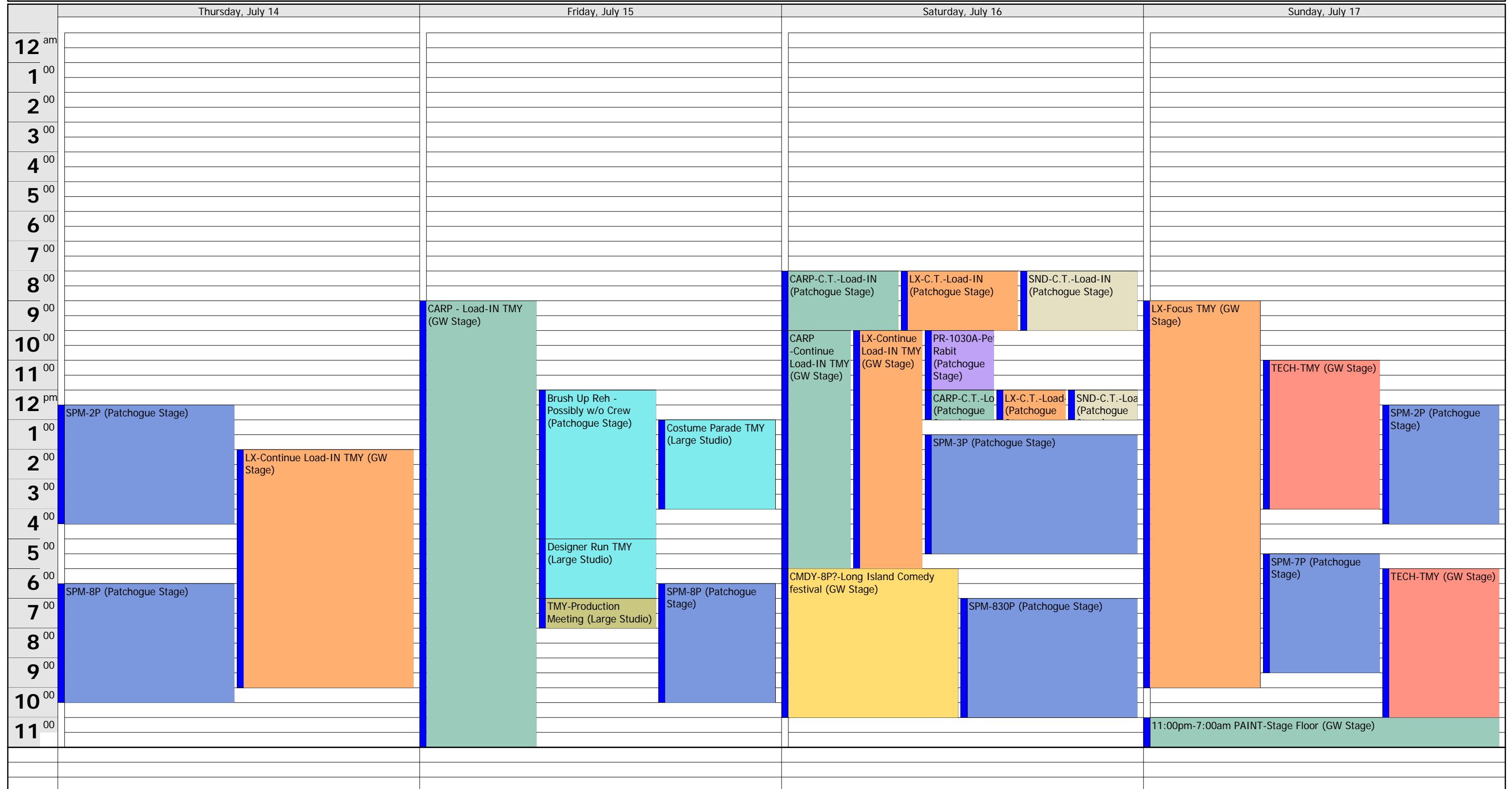
| July 2011 |    |    |    |    |    |    | August 2011 |    |    |    |    |    |    |    |    |
|-----------|----|----|----|----|----|----|-------------|----|----|----|----|----|----|----|----|
|           | M  | T  | W  | T  | F  | S  | S           |    | M  | T  | W  | T  | F  | S  | S  |
| 27        |    |    |    |    | 1  | 2  | 3           | 32 | 1  | 2  | 3  | 4  | 5  | 6  | 7  |
| 28        | 4  | 5  | 6  | 7  | 8  | 9  | 10          | 33 | 8  | 9  | 10 | 11 | 12 | 13 | 14 |
| 29        | 11 | 12 | 13 | 14 | 15 | 16 | 17          | 34 | 15 | 16 | 17 | 18 | 19 | 20 | 21 |
| 30        | 18 | 19 | 20 | 21 | 22 | 23 | 24          | 35 | 22 | 23 | 24 | 25 | 26 | 27 | 28 |
| 31        | 25 | 26 | 27 | 28 | 29 | 30 | 31          | 36 | 29 | 30 | 31 |    |    |    |    |



# July 11 - July 17

|       | Monday, July 11  | Tuesday, July 12  | Wednesday, July 13                   |
|-------|--|---|--------------------------------------|
| 12 am | 10:00am-2:00am CARP - Load-OUT LB (GW Stage)                       | 10:00am-2:00am CARP - Load-OUT LB/Contimue Load-IN Spam (G  |                                      |
| 1 00  | 2:00pm-2:00am LX-Focus-SPAM (Patchogue Stage)                      | 9:30pm-2:00am SND-Transfer Pit from Lobby (Patchogue Stage) |                                      |
| 2 00  |  | CARP-Notes (work around LX) (GW Stage)                      |                                      |
| 3 00  |  | LX -Finish Focus (GW Stage)                                 |                                      |
| 4 00  |  | Production Meeting (P                                       |                                      |
| 5 00  |  |   | LX-Cueing (Patchogue Stage)          |
| 6 00  |  | CARP-TBD (Patchogue Stage)                                  | CARP-TBD (Patchogue Stage)           |
| 7 00  |  | LX-TBD (Patchogue Stage)                                    | LX-TBD (Patchogue Stage)             |
| 8 00  |  | SND-TBD (Patchogue Stage)                                   | SND-TBD (Patchogue Stage)            |
| 9 00  |  |   |                                      |
| 10 00 | 10:00am-2:00am CARP - Load-OUT LB/Contimue Load-IN Spam (GW Stage) | CARP-Notes (Patchogue Stage)                                | CARP-Notes (Patchogue Stage)         |
| 11 00 | Orchestra Rehersal (Patchogue Lobby)                               | LX-Notes (Patchogue Stage)                                  | LX-Cueing (Patchogue Stage)          |
| 12 pm |  | SND-Notes (Patchogue Stage)                                 | LX-Notes (Patchogue Stage)           |
| 1 00  |  | LX-Strike/Hang (GW Stage)                                   | SND-Notes (Patchogue Stage)          |
| 2 00  |  | 10:45am-11:45 Show Crew Lunch                               | 10:45am-11:45 Show Crew Lunch        |
| 3 00  |  | Sweep/Mop/Cle (GW Stage)                                    | Sweep/Mop/Cle (GW Stage)             |
| 4 00  |  | TECH-SPM (Patchogue Stage)                                  | TECH-SPM (Patchogue Stage)           |
| 5 00  |  | Non-Show Crew Lunch   | Non-Show Crew Lunch                  |
| 6 00  |  |   |                                      |
| 7 00  |  | Show Crew Dinner  | Show Crew Dinner                     |
| 8 00  | Sing-Thru (Patchogue Lobby)  | Sweep/Mop/Cle (Patchogue)                                   | Sweep/Mop/Clean-up (Patchogue Stage) |
| 9 00  | SND-Sing-Thru (Patchogue Lobby)                                    | SND-Mic Check Cast (Patchogue)                              |                                      |
| 10 00 | 9:30pm-2:00am SND-Transfer Pit from Lobby (Patchogue Stage)        | Non-Show Crew Dinner  | SPM-8P-OPENS (Patchogue Stage)       |
| 11 00 | TECH -SPAM (Patchogue Stage)                                       |   | Non-Show Crew Dinner                 |

| July 2011 |    |    |    |    |    |    | August 2011 |    |    |    |    |    |    |    |    |
|-----------|----|----|----|----|----|----|-------------|----|----|----|----|----|----|----|----|
|           | M  | T  | W  | T  | F  | S  | S           |    | M  | T  | W  | T  | F  | S  | S  |
| 27        |    |    |    |    | 1  | 2  | 3           | 32 | 1  | 2  | 3  | 4  | 5  | 6  | 7  |
| 28        | 4  | 5  | 6  | 7  | 8  | 9  | 10          | 33 | 8  | 9  | 10 | 11 | 12 | 13 | 14 |
| 29        | 11 | 12 | 13 | 14 | 15 | 16 | 17          | 34 | 15 | 16 | 17 | 18 | 19 | 20 | 21 |
| 30        | 18 | 19 | 20 | 21 | 22 | 23 | 24          | 35 | 22 | 23 | 24 | 25 | 26 | 27 | 28 |
| 31        | 25 | 26 | 27 | 28 | 29 | 30 | 31          | 36 | 29 | 30 | 31 |    |    |    |    |



# July 18 - July 24

|       | Monday, July 18<br>CREW DAY OFF                              | Tuesday, July 19   | Wednesday, July 20  |
|-------|--|--|---|
| 12 am | 11:00pm-7:00am PAINT-Stage Floor (GW Stage)                  |  | LX-Cueing (GW Stage)   CARP-Notes (GW Stage)   LX-Notes (GW Stage)   SND-Notes (GW Stage)   Production Meeting (GW)                                     |
| 1 00  |  |  |   |
| 2 00  |  |  | CARP-TBD (GW Stage)   LX-TBD (GW Stage)   SND-TBD (GW Stage)  |
| 3 00  |  |  |   |
| 4 00  |  |  |   |
| 5 00  |  |  |   |
| 6 00  |  |  |   |
| 7 00  |  |  |   |
| 8 00  |  |  |   |
| 9 00  |  |  |   |
| 10 00 |  | CARP-Notes (GW Stage)   LX-Notes (GW Stage)   SND-Notes (GW Stage)   10:45am-11:45am Show Crew Lunch   Sweep/Mop/Clean- (GW Stage) | CARP-Notes (GW Stage)   LX-Cueing (GW Stage)   LX-Notes (GW Stage)   SND-Notes (GW Stage)   10:45am-11:45 Show Crew Lunch   Sweep/Mop/Clean- (GW Stage) |
| 11 00 | Orchestra Rehearsal (Small Studio)                           | TECH-TMY (GW Stage)  | TECH 1st Dress-TMY (GW Stage)   SND-Mic Check Orchestra (GW S   |
| 12 pm |  |  | SPM-2P (Patchogue Stage)   SND-Mic Check Cast (GW Stage)  |
| 1 00  |  | Non-Show Crew Lunch  | Non-Show Crew Lunch   |
| 2 00  |  |  |   |
| 3 00  |  |  |   |
| 4 00  |  |  |   |
| 5 00  |  | CARP-Notes (GW Stage)   LX-Notes (GW Stage)   SND-Notes (GW Stage)   | CARP-Notes (GW Stage)   LX-Notes (GW Stage)   SND-Notes (GW Stage)  |
| 6 00  | Sing Thru+Spacing - Actors On Stage - NO CREW (Large Studio) | Show Crew Dinner   | Show Crew Dinner  |
| 7 00  |  | TECH-TMY (GW Stage)  | SPM-8P (Patchogue Stage)   TECH 2nd Dress -TMY (GW Stage)   |
| 8 00  |  | Non-Show Crew Dinner   | Non-Show Crew Dinner  |
| 9 00  |  |  |   |
| 10 00 |  |  |   |
| 11 00 |  |  |   |

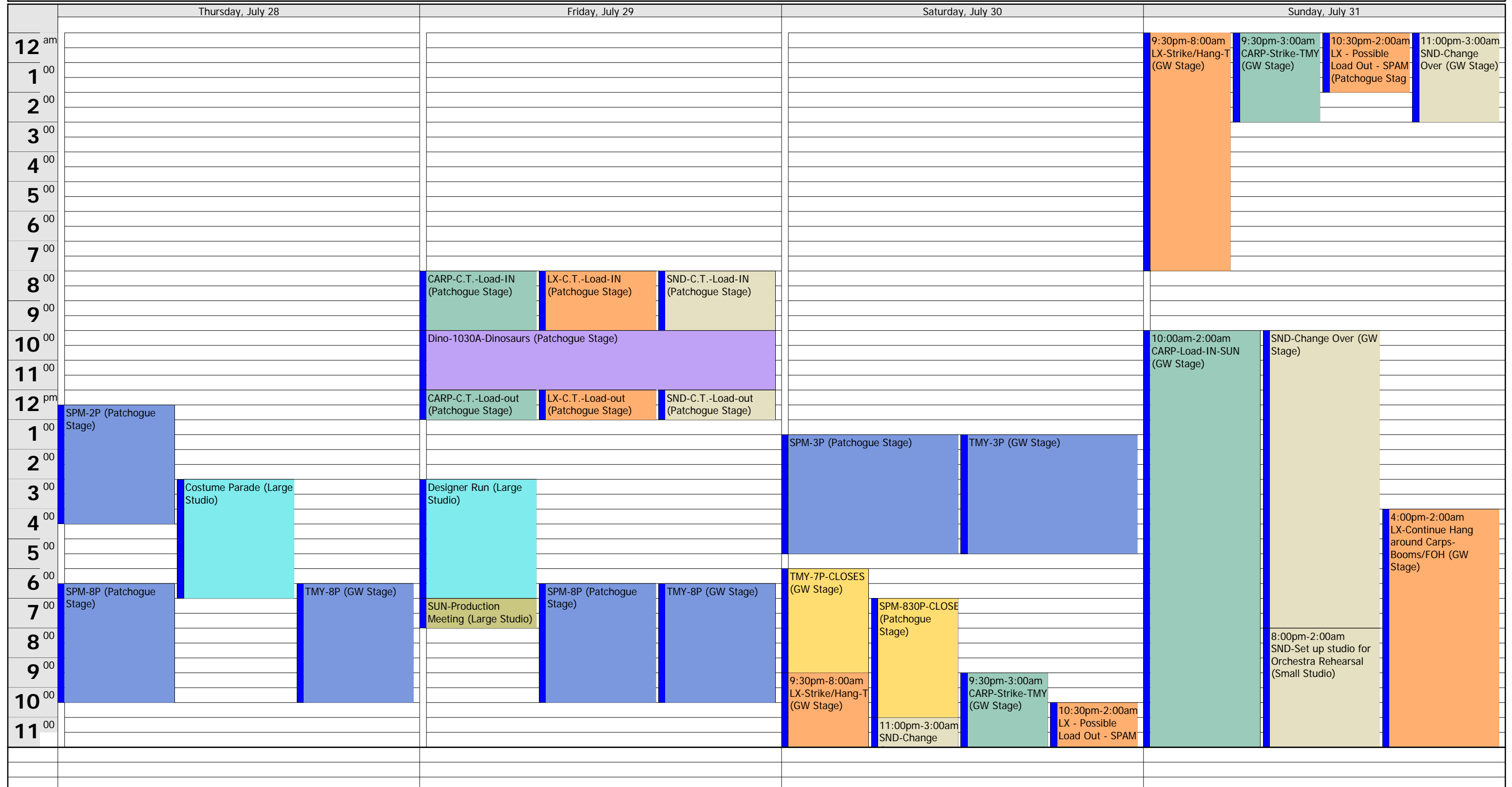
|    |  | July 2011 |    |    |    |    |    |    | August 2011 |  |    |    |    |    |    |    |    |
|----|--|-----------|----|----|----|----|----|----|-------------|--|----|----|----|----|----|----|----|
|    |  | M         | T  | W  | T  | F  | S  | S  |             |  | M  | T  | W  | T  | F  | S  | S  |
| 27 |  |           |    |    |    | 1  | 2  | 3  | 32          |  | 1  | 2  | 3  | 4  | 5  | 6  | 7  |
| 28 |  | 4         | 5  | 6  | 7  | 8  | 9  | 10 | 33          |  | 8  | 9  | 10 | 11 | 12 | 13 | 14 |
| 29 |  | 11        | 12 | 13 | 14 | 15 | 16 | 17 | 34          |  | 15 | 16 | 17 | 18 | 19 | 20 | 21 |
| 30 |  | 18        | 19 | 20 | 21 | 22 | 23 | 24 | 35          |  | 22 | 23 | 24 | 25 | 26 | 27 | 28 |
| 31 |  | 25        | 26 | 27 | 28 | 29 | 30 | 31 | 36          |  | 29 | 30 | 31 |    |    |    |    |

|       | Thursday, July 21   | Friday, July 22  | Saturday, July 23           | Sunday, July 24                              |
|-------|---|--|-----------------------------|--|
| 12 am | LX-Cueing (GW Stage)   CARP-Notes (GW Stage)   LX-Notes (GW Stage)   SND-Notes (GW Stage)   Production Meeting (GW)                     |  | Fundraising Gala (GW Stage) |  |
| 1 00  |   |  |                             |  |
| 2 00  | CARP-TBD (GW Stage)   LX-TBD (GW Stage)   SND-TBD (GW Stage)  |  |                             |  |
| 3 00  |   |  |                             |  |
| 4 00  |   |  |                             |  |
| 5 00  |   |  |                             |  |
| 6 00  |   |  |                             |  |
| 7 00  |   |  |                             |  |
| 8 00  |   | CARP-C.T.-Load-IN (Patchogue Stage)   LX-C.T.-Load-IN (Patchogue Stage)   SND-C.T.-Load-IN (Patchogue Stage) |                             |  |
| 9 00  |   |  |                             |  |
| 10 00 | CARP-Note (GW Stage)   LX-Cueing (GW Stage)   LX-Notes-T (GW Stage)   SND-Notes (GW Stage)   10:45am-1 Show Crew Lunch   Sweep/Mop (GW) | JnB-1030A-Jack and the Beanstalk (Patchogue Stage)   |                             |  |
| 11 00 |   |  |                             |  |
| 12 pm | TECH 3rd Dress-TMY (GW Stage)   | Brush Up Reh - Possibly w/o Crew (GW Stage)  | TMY-2P (GW Stage)           |  |
| 1 00  | SPM-2P (Patchogue Stage)   Non-Show Crew Lunch  | JnB-1P-Jack and the Beanstalk (Patchogue Stage)  |                             |  |
| 2 00  |   | CARP-C.T.-Load-out   LX-C.T.-Load-out   SND-C.T.-Load-out  | SPM-3P (Patchogue Stage)    |  |
| 3 00  |   |  |                             |  |
| 4 00  |   |  |                             |  |
| 5 00  | CARP-Notes (GW Stage)   LX-Notes (GW Stage)   SND-Notes (GW Stage)  | CARP-Notes-TBD (GW Stage)   LX-Notes-TBD (GW Stage)   SND-Notes-TBD (GW Stage)                               |                             |  |
| 6 00  |   | SPM-8P (Patchogue Stage)   Sweep/Mop/C (GW Stage)  | GW FR GALA (GW Stage)       | SPM-7P (Patchogue Stage)   TMY-7P (GW Stage) |
| 7 00  | TMY-8P-OPENS (GW Stage)   |  |                             | SPM-830P (Patchogue Stage)                   |
| 8 00  |   |  |                             |  |
| 9 00  |   |  |                             |  |
| 10 00 | OPENING NIGHT PARTY (GW Lobby)  |  |                             |  |
| 11 00 |   |  |                             |  |

# July 25 - July 31

|                  | Monday, July 25<br>CREW DAY OFF | Tuesday, July 26         | Wednesday, July 27                         |
|------------------|---------------------------------|--------------------------|--|
| 12 <sup>am</sup> |                                 |                          |  |
| 1 <sup>00</sup>  |                                 |                          |  |
| 2 <sup>00</sup>  |                                 |                          |  |
| 3 <sup>00</sup>  |                                 |                          |  |
| 4 <sup>00</sup>  |                                 |                          |  |
| 5 <sup>00</sup>  |                                 |                          |  |
| 6 <sup>00</sup>  |                                 |                          |  |
| 7 <sup>00</sup>  |                                 |                          |  |
| 8 <sup>00</sup>  |                                 |                          |  |
| 9 <sup>00</sup>  |                                 |                          |  |
| 10 <sup>00</sup> |                                 |                          |  |
| 11 <sup>00</sup> |                                 |                          |  |
| 12 <sup>pm</sup> |                                 |                          |  |
| 1 <sup>00</sup>  |                                 |                          | SPM-2P (Patchogue Stage)                   |
| 2 <sup>00</sup>  |                                 |                          |  |
| 3 <sup>00</sup>  |                                 |                          |  |
| 4 <sup>00</sup>  |                                 |                          |  |
| 5 <sup>00</sup>  |                                 |                          |  |
| 6 <sup>00</sup>  |                                 |                          |  |
| 7 <sup>00</sup>  |                                 | SPM-8P (Patchogue Stage) | SPM-8P (Patchogue Stage) TMY-8P (GW Stage) |
| 8 <sup>00</sup>  |                                 |                          |  |
| 9 <sup>00</sup>  |                                 |                          |  |
| 10 <sup>00</sup> |                                 |                          |  |
| 11 <sup>00</sup> |                                 |                          |  |

| July 2011 |    |    |    |    |    |    | August 2011 |    |    |    |    |    |    |    |    |
|-----------|----|----|----|----|----|----|-------------|----|----|----|----|----|----|----|----|
|           | M  | T  | W  | T  | F  | S  | S           |    | M  | T  | W  | T  | F  | S  | S  |
| 27        |    |    |    |    | 1  | 2  | 3           | 32 | 1  | 2  | 3  | 4  | 5  | 6  | 7  |
| 28        | 4  | 5  | 6  | 7  | 8  | 9  | 10          | 33 | 8  | 9  | 10 | 11 | 12 | 13 | 14 |
| 29        | 11 | 12 | 13 | 14 | 15 | 16 | 17          | 34 | 15 | 16 | 17 | 18 | 19 | 20 | 21 |
| 30        | 18 | 19 | 20 | 21 | 22 | 23 | 24          | 35 | 22 | 23 | 24 | 25 | 26 | 27 | 28 |
| 31        | 25 | 26 | 27 | 28 | 29 | 30 | 31          | 36 | 29 | 30 | 31 |    |    |    |    |





| August 2011 |    |    |    |    |    |    | September 2011 |    |    |    |    |    |    |    |    |
|-------------|----|----|----|----|----|----|----------------|----|----|----|----|----|----|----|----|
|             | M  | T  | W  | T  | F  | S  | S              |    | M  | T  | W  | T  | F  | S  | S  |
| 32          | 1  | 2  | 3  | 4  | 5  | 6  | 7              | 36 |    |    |    | 1  | 2  | 3  | 4  |
| 33          | 8  | 9  | 10 | 11 | 12 | 13 | 14             | 37 | 5  | 6  | 7  | 8  | 9  | 10 | 11 |
| 34          | 15 | 16 | 17 | 18 | 19 | 20 | 21             | 38 | 12 | 13 | 14 | 15 | 16 | 17 | 18 |
| 35          | 22 | 23 | 24 | 25 | 26 | 27 | 28             | 39 | 19 | 20 | 21 | 22 | 23 | 24 | 25 |
| 36          | 29 | 30 | 31 |    |    |    |                | 40 | 26 | 27 | 28 | 29 | 30 |    |    |

|       | Thursday, August 04           | Friday, August 05                           | Saturday, August 06                   | Sunday, August 07           |
|-------|-------------------------------|---|---------------------------------------|-----------------------------|
| 12 am |                               | TECH-DORA (GW Stage)                        |                                       |                             |
| 1 00  |                               |   |                                       |                             |
| 2 00  |                               |   |                                       |                             |
| 3 00  |                               | LX-DORA Cueing (GW Stage)                   | CARP-TBD (GW Stage)                   |                             |
| 4 00  |                               |   | LX-TBD (GW Stage)                     |                             |
| 5 00  |                               |   | SND-TBD (GW Stage)                    |                             |
| 6 00  |                               |   |                                       |                             |
| 7 00  |                               |   |                                       |                             |
| 8 00  |                               | 8:00am-9:45am DORA Reh - Cast               |                                       |                             |
| 9 00  |                               |   | 9:45am-10:00am DORA-PRESET (GW Stage) |                             |
| 10 00 | CARP-Notes-TBD (GW Stage)     | LX-Notes-TBD (GW Stage)                     | SND-Notes-TBD (GW Stage)              | Dora-OPENS-1030A (GW Stage) |
| 11 00 |                               |   |                                       | Dora-1030A (GW Stage)       |
| 12 pm | SUN-2P (GW Stage)             | LX-SUN-Cueing (GW Stage)                    | CARP-DORA STRIKE/SUN                  | CARP-DORA STRKE (GW Stage)  |
| 1 00  |                               |   | LX-DORA STRIKE/SUN                    | LX-DORA STRIKE (GW Stage)   |
| 2 00  |                               |   | SND-DORA STRIKE/SUN                   | SND-DORA STRIKE (GW Stage)  |
| 3 00  |                               | Brush Up Reh - Possibly w/o Crew (GW Stage) |                                       | SUN-3P (GW Stage)           |
| 4 00  |                               |   |                                       |                             |
| 5 00  | CARP-Notes-TBD (GW Stage)     | LX-Notes-TBD (GW Stage)                     | SND-Notes-TBD (GW Stage)              |                             |
| 6 00  | SUN-8P (GW Stage)             | SUN-8P (GW Stage)                           | CARP-Notes-TBD (GW Stage)             | SUN-7P (GW Stage)           |
| 7 00  |                               |   | LX-Notes-TBD (GW Stage)               |                             |
| 8 00  |                               |   | SND-Notes-TBD (GW Stage)              |                             |
| 9 00  |                               |   |                                       |                             |
| 10 00 | CARP -DORA Load-IN (GW Stage) | LX -DORA Load-IN (GW Stage)                 | SND -DORA Load-IN (GW Stage)          |                             |
| 11 00 |                               |   |                                       |                             |

# August 08 - August 14

|                  | Monday, August 08<br>CREW DAY OFF | Tuesday, August 09 | Wednesday, August 10 |
|------------------|-----------------------------------|--------------------|----------------------|
| 12 <sup>am</sup> |                                   |                    |                      |
| 1 <sup>00</sup>  |                                   |                    |                      |
| 2 <sup>00</sup>  |                                   |                    |                      |
| 3 <sup>00</sup>  |                                   |                    |                      |
| 4 <sup>00</sup>  |                                   |                    |                      |
| 5 <sup>00</sup>  |                                   |                    |                      |
| 6 <sup>00</sup>  |                                   |                    |                      |
| 7 <sup>00</sup>  |                                   |                    |                      |
| 8 <sup>00</sup>  |                                   |                    |                      |
| 9 <sup>00</sup>  |                                   |                    |                      |
| 10 <sup>00</sup> |                                   |                    |                      |
| 11 <sup>00</sup> |                                   |                    |                      |
| 12 <sup>pm</sup> |                                   |                    |                      |
| 1 <sup>00</sup>  |                                   |                    | SUN-2P (GW Stage)    |
| 2 <sup>00</sup>  |                                   |                    | SUN-2P (GW Stage)    |
| 3 <sup>00</sup>  |                                   |                    | SUN-2P (GW Stage)    |
| 4 <sup>00</sup>  |                                   |                    | SUN-2P (GW Stage)    |
| 5 <sup>00</sup>  |                                   |                    | SUN-2P (GW Stage)    |
| 6 <sup>00</sup>  |                                   |                    | SUN-2P (GW Stage)    |
| 7 <sup>00</sup>  | Jeffrey Wands (GW Stage)          | SUN-8P (GW Stage)  | SUN-8P (GW Stage)    |
| 8 <sup>00</sup>  | Jeffrey Wands (GW Stage)          | SUN-8P (GW Stage)  | SUN-8P (GW Stage)    |
| 9 <sup>00</sup>  | Jeffrey Wands (GW Stage)          | SUN-8P (GW Stage)  | SUN-8P (GW Stage)    |
| 10 <sup>00</sup> | Jeffrey Wands (GW Stage)          | SUN-8P (GW Stage)  | SUN-8P (GW Stage)    |
| 11 <sup>00</sup> |                                   |                    |                      |
|                  |                                   |                    |                      |
|                  |                                   |                    |                      |

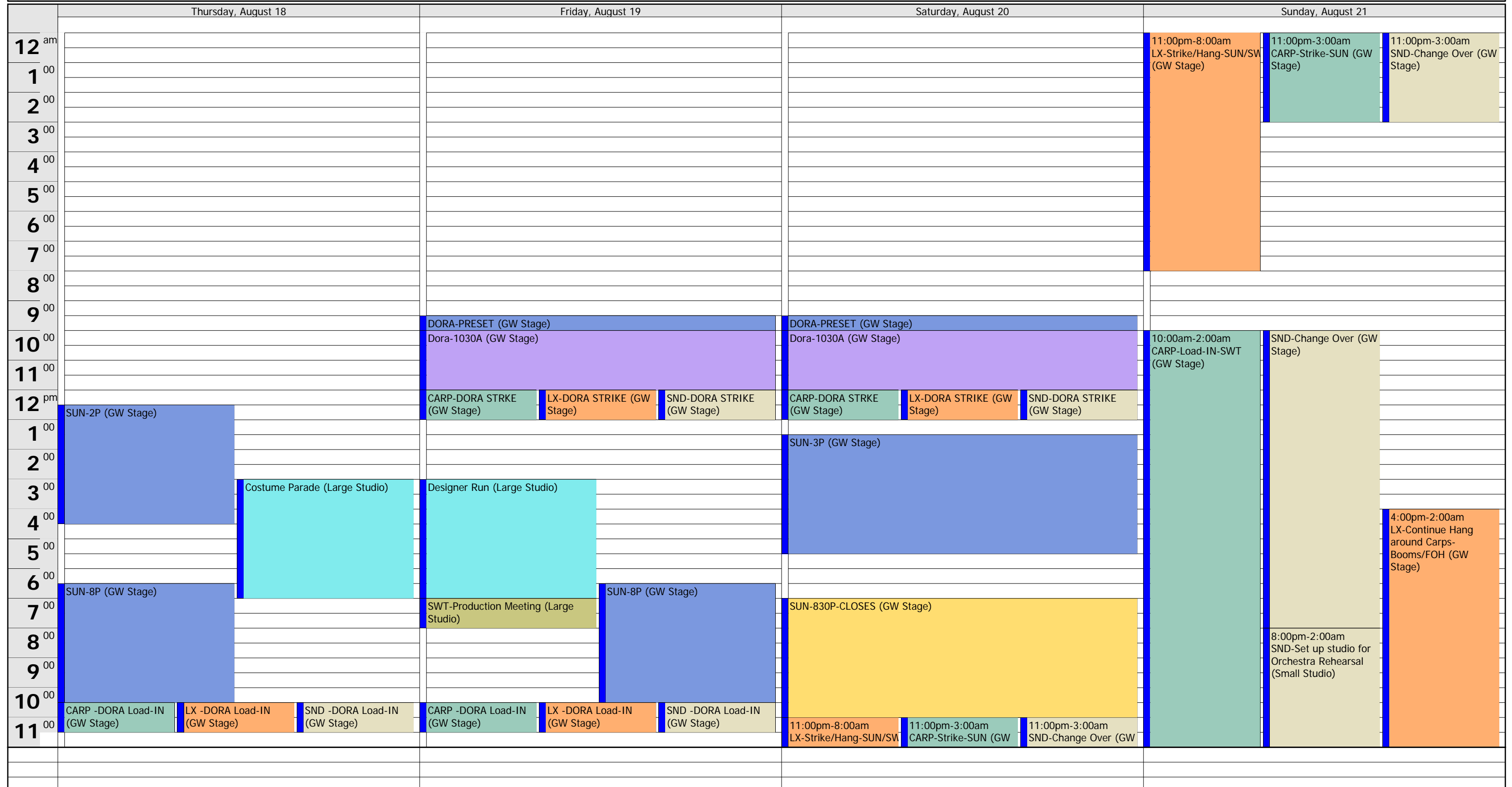
| August 2011 |    |    |    |    |    |    | September 2011 |    |    |    |    |    |    |    |    |
|-------------|----|----|----|----|----|----|----------------|----|----|----|----|----|----|----|----|
|             | M  | T  | W  | T  | F  | S  | S              |    | M  | T  | W  | T  | F  | S  | S  |
| 32          | 1  | 2  | 3  | 4  | 5  | 6  | 7              | 36 |    |    |    | 1  | 2  | 3  | 4  |
| 33          | 8  | 9  | 10 | 11 | 12 | 13 | 14             | 37 | 5  | 6  | 7  | 8  | 9  | 10 | 11 |
| 34          | 15 | 16 | 17 | 18 | 19 | 20 | 21             | 38 | 12 | 13 | 14 | 15 | 16 | 17 | 18 |
| 35          | 22 | 23 | 24 | 25 | 26 | 27 | 28             | 39 | 19 | 20 | 21 | 22 | 23 | 24 | 25 |
| 36          | 29 | 30 | 31 |    |    |    |                | 40 | 26 | 27 | 28 | 29 | 30 |    |    |

|                  | Thursday, August 11  | Friday, August 12  | Saturday, August 13   | Sunday, August 14                             |
|------------------|--|--|---|---|
| 12 <sup>am</sup> |  |  |   |   |
| 1 <sup>00</sup>  |  |  |   |   |
| 2 <sup>00</sup>  |  |  |   |   |
| 3 <sup>00</sup>  |  |  |   |   |
| 4 <sup>00</sup>  |  |  |   |   |
| 5 <sup>00</sup>  |  |  |   |   |
| 6 <sup>00</sup>  |  |  |   |   |
| 7 <sup>00</sup>  |  |  |   |   |
| 8 <sup>00</sup>  |  |  |   |   |
| 9 <sup>00</sup>  |  |  |   |   |
| 10 <sup>00</sup> |  | DORA-PRESET (GW Stage)<br>Dora-1030A (GW Stage)  | DORA-PRESET (GW Stage)<br>Dora-1030A (GW Stage)                                     | Workshop/Audition + Career Seminar (GW Stage) |
| 11 <sup>00</sup> |  |  |   |   |
| 12 <sup>pm</sup> | SUN-2P (GW Stage)  | CARP-DORA STRKE (GW Stage)   LX-DORA STRIKE (GW Stage)   SND-DORA STRIKE (GW Stage)        | CARP-DORA STRKE (GW Stage)   LX-DORA STRIKE (GW Stage)   SND-DORA STRIKE (GW Stage) |   |
| 1 <sup>00</sup>  |  |  | SUN-3P (GW Stage)   |   |
| 2 <sup>00</sup>  |  |  |   |   |
| 3 <sup>00</sup>  |  |  |   |   |
| 4 <sup>00</sup>  |  |  |   |   |
| 5 <sup>00</sup>  |  |  |   |   |
| 6 <sup>00</sup>  | SUN-8P (GW Stage)  | SUN-8P (GW Stage)  |   | SUN-7P (GW Stage)                             |
| 7 <sup>00</sup>  |  |  | SUN-830P (GW Stage)   |   |
| 8 <sup>00</sup>  |  |  |   |   |
| 9 <sup>00</sup>  |  |  |   |   |
| 10 <sup>00</sup> | CARP -DORA Load-IN (GW Stage)   LX -DORA Load-IN (GW Stage)   SND -DORA Load-IN (GW Stage) | CARP -DORA Load-IN (GW Stage)   LX -DORA Load-IN (GW Stage)   SND -DORA Load-IN (GW Stage) |   |   |
| 11 <sup>00</sup> |  |  |   |   |

# August 15 - August 21

|                  | Monday, August 15<br>CREW DAY OFF             | Tuesday, August 16 | Wednesday, August 17 |
|------------------|---|--------------------|----------------------|
| 12 <sup>am</sup> |   |                    |                      |
| 1 <sup>00</sup>  |   |                    |                      |
| 2 <sup>00</sup>  |   |                    |                      |
| 3 <sup>00</sup>  |   |                    |                      |
| 4 <sup>00</sup>  |   |                    |                      |
| 5 <sup>00</sup>  |   |                    |                      |
| 6 <sup>00</sup>  |   |                    |                      |
| 7 <sup>00</sup>  |   |                    |                      |
| 8 <sup>00</sup>  |   |                    |                      |
| 9 <sup>00</sup>  |   |                    |                      |
| 10 <sup>00</sup> |   |                    |                      |
| 11 <sup>00</sup> |   |                    |                      |
| 12 <sup>pm</sup> | Workshop/Audition + Career Seminar (GW Stage) |                    | SUN-2P (GW Stage)    |
| 1 <sup>00</sup>  |   |                    |                      |
| 2 <sup>00</sup>  |   |                    |                      |
| 3 <sup>00</sup>  |   |                    |                      |
| 4 <sup>00</sup>  |   |                    |                      |
| 5 <sup>00</sup>  |   |                    |                      |
| 6 <sup>00</sup>  |   |                    |                      |
| 7 <sup>00</sup>  |   |                    |                      |
| 8 <sup>00</sup>  |   | SUN-8P (GW Stage)  | SUN-8P (GW Stage)    |
| 9 <sup>00</sup>  |   |                    |                      |
| 10 <sup>00</sup> |   |                    |                      |
| 11 <sup>00</sup> |   |                    |                      |

| August 2011 |    |    |    |    |    |    | September 2011 |    |    |    |    |    |    |    |    |
|-------------|----|----|----|----|----|----|----------------|----|----|----|----|----|----|----|----|
|             | M  | T  | W  | T  | F  | S  | S              |    | M  | T  | W  | T  | F  | S  | S  |
| 32          | 1  | 2  | 3  | 4  | 5  | 6  | 7              | 36 |    |    |    | 1  | 2  | 3  | 4  |
| 33          | 8  | 9  | 10 | 11 | 12 | 13 | 14             | 37 | 5  | 6  | 7  | 8  | 9  | 10 | 11 |
| 34          | 15 | 16 | 17 | 18 | 19 | 20 | 21             | 38 | 12 | 13 | 14 | 15 | 16 | 17 | 18 |
| 35          | 22 | 23 | 24 | 25 | 26 | 27 | 28             | 39 | 19 | 20 | 21 | 22 | 23 | 24 | 25 |
| 36          | 29 | 30 | 31 |    |    |    |                | 40 | 26 | 27 | 28 | 29 | 30 |    |    |



# August 22 - August 28

|       | Monday, August 22  | Tuesday, August 23                                    | Wednesday, August 24                  |
|-------|--|---|---------------------------------------|
| 12 am | 10:00am-2:00am CARP-Load-IN-SWT (GW Stage)                             | 9:30pm-2:00am SND-Transfer Pit from studio (GW Stage) | CARP-Notes (GW Stage)                 |
| 1 00  | 4:00pm-2:00am LX-Continue Hang around Carps-Booms/FOH (GW Stage)       | CARP-Notes (work around LX) (GW Stage)                | LX-Notes (GW Stage)                   |
| 2 00  | 8:00pm-2:00am SND-Set up studio for Orchestra Rehearsal (Small Studio) | LX-Finish Focus (GW Stage)                            | SND-Notes (GW Stage)                  |
| 3 00  |  | Production Meeting (GW Theater Seats)                 | Production Meeting (GW Theater Seats) |
| 4 00  | PAINT-Stage Floor (GW Stage)   | CARP-TBD (GW Stage)                                   | CARP-TBD (GW Stage)                   |
| 5 00  |  | LX-TBD (GW Stage)                                     | LX-TBD (GW Stage)                     |
| 6 00  |  | SND-TBD (GW Stage)                                    | SND-TBD (GW Stage)                    |
| 7 00  |  |   | LX-Cueing (GW Stage)                  |
| 8 00  |  |   |                                       |
| 9 00  |  |   |                                       |
| 10 00 | CARP-Continue Load-IN (GW Stage)                                       | CARP-Notes (GW Stage)                                 |                                       |
| 11 00 | LX-Focus (GW Stage)  | LX-Notes (GW Stage)                                   | 10:45am-11:45am Show Crew Lunch       |
| 12 pm | SND-Continue Load-IN (GW Stage)  | SND-Notes (GW Stage)                                  | Sweep/Mop/Clean-up (GW Stage)         |
| 1 00  | Orchestra Rehearsal (Small Studio)                                     | TECH-SWT (GW Stage)                                   | 10:45am-11:45am Show Crew Lunch       |
| 2 00  |  | Non-Show Crew Lunch                                   | CARP-Notes (GW Stage)                 |
| 3 00  |  |   | LX-Notes (GW Stage)                   |
| 4 00  |  |   | SND-Notes (GW Stage)                  |
| 5 00  |  | CARP-Notes (GW Stage)                                 | Sweep/Mop/Clean-up (GW Stage)         |
| 6 00  |  | LX-Notes (GW Stage)                                   |                                       |
| 7 00  |  | SND-Notes (GW Stage)                                  |                                       |
| 8 00  |  | Show Crew Dinner                                      |                                       |
| 9 00  |  | Sweep/Mop/Clean-up (GW Stage)                         |                                       |
| 10 00 | 9:30pm-2:00am SND-Transfer Pit from studio (GW Stage)                  | TECH-SWT (GW Stage)                                   | SWT-8P-OPENS (GW Stage)               |
| 11 00 | Spacing - Actors On Stage (GW Stage)                                   | SND-Mic Check Orchestra (GW Stage)                    |                                       |
|       |  | SND-Mic Check Cast (GW Stage)                         |                                       |
|       |  | Non-Show Crew Dinner                                  |                                       |
|       |  |   | OPENING NIGHT PARTY (GW Lobby)        |

| August 2011 |    |    |    |    |    |    | September 2011 |    |    |    |    |    |    |    |    |
|-------------|----|----|----|----|----|----|----------------|----|----|----|----|----|----|----|----|
|             | M  | T  | W  | T  | F  | S  | S              |    | M  | T  | W  | T  | F  | S  | S  |
| 32          | 1  | 2  | 3  | 4  | 5  | 6  | 7              | 36 |    |    |    | 1  | 2  | 3  | 4  |
| 33          | 8  | 9  | 10 | 11 | 12 | 13 | 14             | 37 | 5  | 6  | 7  | 8  | 9  | 10 | 11 |
| 34          | 15 | 16 | 17 | 18 | 19 | 20 | 21             | 38 | 12 | 13 | 14 | 15 | 16 | 17 | 18 |
| 35          | 22 | 23 | 24 | 25 | 26 | 27 | 28             | 39 | 19 | 20 | 21 | 22 | 23 | 24 | 25 |
| 36          | 29 | 30 | 31 |    |    |    |                | 40 | 26 | 27 | 28 | 29 | 30 |    |    |

|                  | Thursday, August 25       | Friday, August 26                           | Saturday, August 27               | Sunday, August 28                          |                          |
|------------------|---------------------------|---|-----------------------------------|--|--------------------------|
| 12 <sup>am</sup> |                           |   |                                   |  |                          |
| 1 <sup>00</sup>  |                           |   |                                   |  |                          |
| 2 <sup>00</sup>  |                           |   |                                   |  |                          |
| 3 <sup>00</sup>  |                           |   |                                   |  |                          |
| 4 <sup>00</sup>  |                           |   |                                   |  |                          |
| 5 <sup>00</sup>  |                           |   |                                   |  |                          |
| 6 <sup>00</sup>  |                           |   |                                   |  |                          |
| 7 <sup>00</sup>  |                           |   |                                   |  |                          |
| 8 <sup>00</sup>  |                           | CARP-C.T.-Load-IN (Patchogue Stage)         | LX-C.T.-Load-IN (Patchogue Stage) | SND-C.T.-Load-IN (Patchogue Stage)         |                          |
| 9 <sup>00</sup>  |                           |   |                                   |  |                          |
| 10 <sup>00</sup> | CARP-Notes-TBD (GW Stage) | LX-Notes-TBD (GW Stage)                     | SND-Notes-TBD (GW Stage)          | TtF-1030A-Tales from the Forest (GW Stage) |                          |
| 11 <sup>00</sup> |                           |   |                                   |  |                          |
| 12 <sup>pm</sup> |                           |   |                                   |  |                          |
| 1 <sup>00</sup>  | SWT-2P (GW Stage)         | TtF-1P-Tales from the Forest (GW Stage)     |                                   | SWT-2P (GW Stage)                          |                          |
| 2 <sup>00</sup>  |                           | Brush Up Reh (Large Studio)                 |                                   |  |                          |
| 3 <sup>00</sup>  |                           | LX-Cueing (GW Stage)                        | CARP-C.T.-Lo                      | LX-C.T.-Load                               | SND-C.T.-Lo              |
| 4 <sup>00</sup>  |                           | Brush Up Reh - Possibly w/o Crew (GW Stage) |                                   |  |                          |
| 5 <sup>00</sup>  | CARP-Notes-TBD (GW Stage) | LX-Notes-TBD (GW Stage)                     | SND-Notes-TBD (GW Stage)          |  |                          |
| 6 <sup>00</sup>  |                           |   | CARP-Notes-TBD (GW Stage)         | LX-Notes-TBD (GW Stage)                    | SND-Notes-TBD (GW Stage) |
| 7 <sup>00</sup>  | SWT-8P (GW Stage)         | SWT-8P (GW Stage)                           |                                   |  | SWT-7P (GW Stage)        |
| 8 <sup>00</sup>  |                           |   |                                   |  |                          |
| 9 <sup>00</sup>  |                           |   |                                   |  |                          |
| 10 <sup>00</sup> |                           |   | SWT-830P (GW Stage)               |  |                          |
| 11 <sup>00</sup> |                           |   |                                   |  |                          |

# August 29 - September 04

|                  | Monday, August 29<br>CREW DAY OFF | Tuesday, August 30 | Wednesday, August 31 |
|------------------|-----------------------------------|--------------------|----------------------|
| 12 <sup>am</sup> |                                   |                    |                      |
| 1 <sup>00</sup>  |                                   |                    |                      |
| 2 <sup>00</sup>  |                                   |                    |                      |
| 3 <sup>00</sup>  |                                   |                    |                      |
| 4 <sup>00</sup>  |                                   |                    |                      |
| 5 <sup>00</sup>  |                                   |                    |                      |
| 6 <sup>00</sup>  |                                   |                    |                      |
| 7 <sup>00</sup>  |                                   |                    |                      |
| 8 <sup>00</sup>  |                                   |                    |                      |
| 9 <sup>00</sup>  |                                   |                    |                      |
| 10 <sup>00</sup> |                                   |                    |                      |
| 11 <sup>00</sup> |                                   |                    |                      |
| 12 <sup>pm</sup> |                                   |                    |                      |
| 1 <sup>00</sup>  |                                   |                    | SWT-2P (GW Stage)    |
| 2 <sup>00</sup>  |                                   |                    |                      |
| 3 <sup>00</sup>  |                                   |                    |                      |
| 4 <sup>00</sup>  |                                   |                    |                      |
| 5 <sup>00</sup>  |                                   |                    |                      |
| 6 <sup>00</sup>  |                                   |                    |                      |
| 7 <sup>00</sup>  |                                   | SWT-8P (GW Stage)  | SWT-8P (GW Stage)    |
| 8 <sup>00</sup>  |                                   |                    |                      |
| 9 <sup>00</sup>  |                                   |                    |                      |
| 10 <sup>00</sup> |                                   |                    |                      |
| 11 <sup>00</sup> |                                   |                    |                      |

| September 2011 |    |    |    |    |    |    | October 2011 |    |    |    |    |    |    |    |    |
|----------------|----|----|----|----|----|----|--------------|----|----|----|----|----|----|----|----|
|                | M  | T  | W  | T  | F  | S  | S            |    | M  | T  | W  | T  | F  | S  | S  |
| 36             |    |    |    | 1  | 2  | 3  | 4            | 40 |    |    |    |    |    | 1  | 2  |
| 37             | 5  | 6  | 7  | 8  | 9  | 10 | 11           | 41 | 3  | 4  | 5  | 6  | 7  | 8  | 9  |
| 38             | 12 | 13 | 14 | 15 | 16 | 17 | 18           | 42 | 10 | 11 | 12 | 13 | 14 | 15 | 16 |
| 39             | 19 | 20 | 21 | 22 | 23 | 24 | 25           | 43 | 17 | 18 | 19 | 20 | 21 | 22 | 23 |
| 40             | 26 | 27 | 28 | 29 | 30 |    |              | 44 | 24 | 25 | 26 | 27 | 28 | 29 | 30 |
|                |    |    |    |    |    |    |              | 45 | 31 |    |    |    |    |    |    |

|                  | Thursday, September 01 | Friday, September 02 | Saturday, September 03 | Sunday, September 04 |
|------------------|------------------------|----------------------|------------------------|----------------------|
| 12 <sup>am</sup> |                        |                      |                        |                      |
| 1 <sup>00</sup>  |                        |                      |                        |                      |
| 2 <sup>00</sup>  |                        |                      |                        |                      |
| 3 <sup>00</sup>  |                        |                      |                        |                      |
| 4 <sup>00</sup>  |                        |                      |                        |                      |
| 5 <sup>00</sup>  |                        |                      |                        |                      |
| 6 <sup>00</sup>  |                        |                      |                        |                      |
| 7 <sup>00</sup>  |                        |                      |                        |                      |
| 8 <sup>00</sup>  |                        |                      |                        |                      |
| 9 <sup>00</sup>  |                        |                      |                        |                      |
| 10 <sup>00</sup> |                        |                      |                        |                      |
| 11 <sup>00</sup> |                        |                      |                        |                      |
| 12 <sup>pm</sup> |                        |                      |                        |                      |
| 1 <sup>00</sup>  | SWT-2P (GW Stage)      |                      | SWT-3P (GW Stage)      |                      |
| 2 <sup>00</sup>  | SWT-2P (GW Stage)      |                      | SWT-3P (GW Stage)      |                      |
| 3 <sup>00</sup>  | SWT-2P (GW Stage)      |                      | SWT-3P (GW Stage)      |                      |
| 4 <sup>00</sup>  | SWT-2P (GW Stage)      |                      | SWT-3P (GW Stage)      |                      |
| 5 <sup>00</sup>  |                        |                      |                        |                      |
| 6 <sup>00</sup>  | SWT-8P (GW Stage)      | SWT-8P (GW Stage)    |                        | SWT-7P (GW Stage)    |
| 7 <sup>00</sup>  | SWT-8P (GW Stage)      | SWT-8P (GW Stage)    | SWT-830P (GW Stage)    | SWT-7P (GW Stage)    |
| 8 <sup>00</sup>  | SWT-8P (GW Stage)      | SWT-8P (GW Stage)    | SWT-830P (GW Stage)    | SWT-7P (GW Stage)    |
| 9 <sup>00</sup>  | SWT-8P (GW Stage)      | SWT-8P (GW Stage)    | SWT-830P (GW Stage)    | SWT-7P (GW Stage)    |
| 10 <sup>00</sup> | SWT-8P (GW Stage)      | SWT-8P (GW Stage)    | SWT-830P (GW Stage)    | SWT-7P (GW Stage)    |
| 11 <sup>00</sup> |                        |                      |                        |                      |

# September 05 - September 11

|                  | Monday, September 05<br>CREW DAY OFF | Tuesday, September 06 | Wednesday, September 07 |
|------------------|--------------------------------------|-----------------------|-------------------------|
| 12 <sup>am</sup> |                                      |                       |                         |
| 1 <sup>00</sup>  |                                      |                       |                         |
| 2 <sup>00</sup>  |                                      |                       |                         |
| 3 <sup>00</sup>  |                                      |                       |                         |
| 4 <sup>00</sup>  |                                      |                       |                         |
| 5 <sup>00</sup>  |                                      |                       |                         |
| 6 <sup>00</sup>  |                                      |                       |                         |
| 7 <sup>00</sup>  |                                      |                       |                         |
| 8 <sup>00</sup>  |                                      |                       |                         |
| 9 <sup>00</sup>  |                                      |                       |                         |
| 10 <sup>00</sup> |                                      |                       |                         |
| 11 <sup>00</sup> |                                      |                       |                         |
| 12 <sup>pm</sup> |                                      |                       |                         |
| 1 <sup>00</sup>  |                                      |                       | SWT-2P (GW Stage)       |
| 2 <sup>00</sup>  |                                      |                       |                         |
| 3 <sup>00</sup>  |                                      |                       |                         |
| 4 <sup>00</sup>  |                                      |                       |                         |
| 5 <sup>00</sup>  |                                      |                       |                         |
| 6 <sup>00</sup>  |                                      |                       |                         |
| 7 <sup>00</sup>  |                                      | SWT-8P (GW Stage)     | SWT-8P (GW Stage)       |
| 8 <sup>00</sup>  |                                      |                       |                         |
| 9 <sup>00</sup>  |                                      |                       |                         |
| 10 <sup>00</sup> |                                      |                       |                         |
| 11 <sup>00</sup> |                                      |                       |                         |

| September 2011 |    |    |    |    |    |    | October 2011 |    |    |    |    |    |    |    |    |
|----------------|----|----|----|----|----|----|--------------|----|----|----|----|----|----|----|----|
|                | M  | T  | W  | T  | F  | S  | S            |    | M  | T  | W  | T  | F  | S  | S  |
| 36             |    |    |    | 1  | 2  | 3  | 4            | 40 |    |    |    |    |    | 1  | 2  |
| 37             | 5  | 6  | 7  | 8  | 9  | 10 | 11           | 41 | 3  | 4  | 5  | 6  | 7  | 8  | 9  |
| 38             | 12 | 13 | 14 | 15 | 16 | 17 | 18           | 42 | 10 | 11 | 12 | 13 | 14 | 15 | 16 |
| 39             | 19 | 20 | 21 | 22 | 23 | 24 | 25           | 43 | 17 | 18 | 19 | 20 | 21 | 22 | 23 |
| 40             | 26 | 27 | 28 | 29 | 30 |    |              | 44 | 24 | 25 | 26 | 27 | 28 | 29 | 30 |
|                |    |    |    |    |    |    |              | 45 | 31 |    |    |    |    |    |    |

|                  | Thursday, September 08 | Friday, September 09 | Saturday, September 10 | Sunday, September 11     |
|------------------|------------------------|----------------------|------------------------|--------------------------|
| 12 <sup>am</sup> |                        |                      |                        |                          |
| 1 <sup>00</sup>  |                        |                      |                        |                          |
| 2 <sup>00</sup>  |                        |                      |                        |                          |
| 3 <sup>00</sup>  |                        |                      |                        |                          |
| 4 <sup>00</sup>  |                        |                      |                        |                          |
| 5 <sup>00</sup>  |                        |                      |                        |                          |
| 6 <sup>00</sup>  |                        |                      |                        |                          |
| 7 <sup>00</sup>  |                        |                      |                        |                          |
| 8 <sup>00</sup>  |                        |                      |                        |                          |
| 9 <sup>00</sup>  |                        |                      |                        |                          |
| 10 <sup>00</sup> |                        |                      |                        |                          |
| 11 <sup>00</sup> |                        |                      |                        |                          |
| 12 <sup>pm</sup> |                        |                      |                        |                          |
| 1 <sup>00</sup>  | SWT-2P (GW Stage)      |                      | SWT-3P (GW Stage)      | SWT-2P-CLOSES (GW Stage) |
| 2 <sup>00</sup>  | SWT-2P (GW Stage)      |                      | SWT-3P (GW Stage)      | SWT-2P-CLOSES (GW Stage) |
| 3 <sup>00</sup>  | SWT-2P (GW Stage)      |                      | SWT-3P (GW Stage)      | SWT-2P-CLOSES (GW Stage) |
| 4 <sup>00</sup>  | SWT-2P (GW Stage)      |                      | SWT-3P (GW Stage)      | SWT-2P-CLOSES (GW Stage) |
| 5 <sup>00</sup>  |                        |                      |                        |                          |
| 6 <sup>00</sup>  | SWT-8P (GW Stage)      | SWT-8P (GW Stage)    |                        |                          |
| 7 <sup>00</sup>  | SWT-8P (GW Stage)      | SWT-8P (GW Stage)    | SWT-830P (GW Stage)    |                          |
| 8 <sup>00</sup>  | SWT-8P (GW Stage)      | SWT-8P (GW Stage)    | SWT-830P (GW Stage)    |                          |
| 9 <sup>00</sup>  | SWT-8P (GW Stage)      | SWT-8P (GW Stage)    | SWT-830P (GW Stage)    |                          |
| 10 <sup>00</sup> | SWT-8P (GW Stage)      | SWT-8P (GW Stage)    | SWT-830P (GW Stage)    |                          |
| 11 <sup>00</sup> |                        |                      |                        |                          |

# September 12 - September 18

|                  | Monday, September 12 | Tuesday, September 13 | Wednesday, September 14 |
|------------------|----------------------|-----------------------|-------------------------|
|                  | SWT-Load-Out         |                       | Haunted House Load-IN   |
| 12 <sup>am</sup> |                      |                       |                         |
| 1 <sup>00</sup>  |                      |                       |                         |
| 2 <sup>00</sup>  |                      |                       |                         |
| 3 <sup>00</sup>  |                      |                       |                         |
| 4 <sup>00</sup>  |                      |                       |                         |
| 5 <sup>00</sup>  |                      |                       |                         |
| 6 <sup>00</sup>  |                      |                       |                         |
| 7 <sup>00</sup>  |                      |                       |                         |
| 8 <sup>00</sup>  |                      |                       |                         |
| 9 <sup>00</sup>  |                      |                       |                         |
| 10 <sup>00</sup> |                      |                       |                         |
| 11 <sup>00</sup> |                      |                       |                         |
| 12 <sup>pm</sup> |                      |                       |                         |
| 1 <sup>00</sup>  |                      |                       |                         |
| 2 <sup>00</sup>  |                      |                       |                         |
| 3 <sup>00</sup>  |                      |                       |                         |
| 4 <sup>00</sup>  |                      |                       |                         |
| 5 <sup>00</sup>  |                      |                       |                         |
| 6 <sup>00</sup>  |                      |                       |                         |
| 7 <sup>00</sup>  |                      |                       |                         |
| 8 <sup>00</sup>  |                      |                       |                         |
| 9 <sup>00</sup>  |                      |                       |                         |
| 10 <sup>00</sup> |                      |                       |                         |
| 11 <sup>00</sup> |                      |                       |                         |
|                  |                      |                       |                         |
|                  |                      |                       |                         |

| September 2011 |    |    |    |    |    |    | October 2011 |    |    |    |    |    |    |    |    |
|----------------|----|----|----|----|----|----|--------------|----|----|----|----|----|----|----|----|
|                | M  | T  | W  | T  | F  | S  | S            |    | M  | T  | W  | T  | F  | S  | S  |
| 36             |    |    |    | 1  | 2  | 3  | 4            | 40 |    |    |    |    |    | 1  | 2  |
| 37             | 5  | 6  | 7  | 8  | 9  | 10 | 11           | 41 | 3  | 4  | 5  | 6  | 7  | 8  | 9  |
| 38             | 12 | 13 | 14 | 15 | 16 | 17 | 18           | 42 | 10 | 11 | 12 | 13 | 14 | 15 | 16 |
| 39             | 19 | 20 | 21 | 22 | 23 | 24 | 25           | 43 | 17 | 18 | 19 | 20 | 21 | 22 | 23 |
| 40             | 26 | 27 | 28 | 29 | 30 |    |              | 44 | 24 | 25 | 26 | 27 | 28 | 29 | 30 |
|                |    |    |    |    |    |    |              | 45 | 31 |    |    |    |    |    |    |

|                  | Thursday, September 15 | Friday, September 16 | Saturday, September 17 | Sunday, September 18 |
|------------------|------------------------|----------------------|------------------------|----------------------|
|                  | Haunted House Load-IN  |                      |                        |                      |
| 12 <sup>am</sup> |                        |                      |                        |                      |
| 1 <sup>00</sup>  |                        |                      |                        |                      |
| 2 <sup>00</sup>  |                        |                      |                        |                      |
| 3 <sup>00</sup>  |                        |                      |                        |                      |
| 4 <sup>00</sup>  |                        |                      |                        |                      |
| 5 <sup>00</sup>  |                        |                      |                        |                      |
| 6 <sup>00</sup>  |                        |                      |                        |                      |
| 7 <sup>00</sup>  |                        |                      |                        |                      |
| 8 <sup>00</sup>  |                        |                      |                        |                      |
| 9 <sup>00</sup>  |                        |                      |                        |                      |
| 10 <sup>00</sup> |                        |                      |                        |                      |
| 11 <sup>00</sup> |                        |                      |                        |                      |
| 12 <sup>pm</sup> |                        |                      |                        |                      |
| 1 <sup>00</sup>  |                        |                      |                        |                      |
| 2 <sup>00</sup>  |                        |                      |                        |                      |
| 3 <sup>00</sup>  |                        |                      |                        |                      |
| 4 <sup>00</sup>  |                        |                      |                        |                      |
| 5 <sup>00</sup>  |                        |                      |                        |                      |
| 6 <sup>00</sup>  |                        |                      |                        |                      |
| 7 <sup>00</sup>  |                        |                      |                        |                      |
| 8 <sup>00</sup>  |                        |                      |                        |                      |
| 9 <sup>00</sup>  |                        |                      |                        |                      |
| 10 <sup>00</sup> |                        |                      |                        |                      |
| 11 <sup>00</sup> |                        |                      |                        |                      |

# September 19 - September 25

|                  | Monday, September 19 | Tuesday, September 20<br>Haunted House Load-IN | Wednesday, September 21 |
|------------------|----------------------|--|-------------------------|
| 12 <sup>am</sup> |                      |  |                         |
| 1 <sup>00</sup>  |                      |  |                         |
| 2 <sup>00</sup>  |                      |  |                         |
| 3 <sup>00</sup>  |                      |  |                         |
| 4 <sup>00</sup>  |                      |  |                         |
| 5 <sup>00</sup>  |                      |  |                         |
| 6 <sup>00</sup>  |                      |  |                         |
| 7 <sup>00</sup>  |                      |  |                         |
| 8 <sup>00</sup>  |                      |  |                         |
| 9 <sup>00</sup>  |                      |  |                         |
| 10 <sup>00</sup> |                      |  |                         |
| 11 <sup>00</sup> |                      |  |                         |
| 12 <sup>pm</sup> |                      |  |                         |
| 1 <sup>00</sup>  |                      |  |                         |
| 2 <sup>00</sup>  |                      |  |                         |
| 3 <sup>00</sup>  |                      |  |                         |
| 4 <sup>00</sup>  |                      |  |                         |
| 5 <sup>00</sup>  |                      |  |                         |
| 6 <sup>00</sup>  |                      |  |                         |
| 7 <sup>00</sup>  |                      |  |                         |
| 8 <sup>00</sup>  |                      |  |                         |
| 9 <sup>00</sup>  |                      |  |                         |
| 10 <sup>00</sup> |                      |  |                         |
| 11 <sup>00</sup> |                      |  |                         |

| September 2011 |    |    |    |    |    |    | October 2011 |    |    |    |    |    |    |    |    |
|----------------|----|----|----|----|----|----|--------------|----|----|----|----|----|----|----|----|
|                | M  | T  | W  | T  | F  | S  | S            |    | M  | T  | W  | T  | F  | S  | S  |
| 36             |    |    |    | 1  | 2  | 3  | 4            | 40 |    |    |    |    |    | 1  | 2  |
| 37             | 5  | 6  | 7  | 8  | 9  | 10 | 11           | 41 | 3  | 4  | 5  | 6  | 7  | 8  | 9  |
| 38             | 12 | 13 | 14 | 15 | 16 | 17 | 18           | 42 | 10 | 11 | 12 | 13 | 14 | 15 | 16 |
| 39             | 19 | 20 | 21 | 22 | 23 | 24 | 25           | 43 | 17 | 18 | 19 | 20 | 21 | 22 | 23 |
| 40             | 26 | 27 | 28 | 29 | 30 |    |              | 44 | 24 | 25 | 26 | 27 | 28 | 29 | 30 |
|                |    |    |    |    |    |    |              | 45 | 31 |    |    |    |    |    |    |

|                  | Thursday, September 22 | Friday, September 23 | Saturday, September 24 | Sunday, September 25 |
|------------------|------------------------|----------------------|------------------------|----------------------|
|                  | Haunted House Load-IN  |                      |                        |                      |
| 12 <sup>am</sup> |                        |                      |                        |                      |
| 1 <sup>00</sup>  |                        |                      |                        |                      |
| 2 <sup>00</sup>  |                        |                      |                        |                      |
| 3 <sup>00</sup>  |                        |                      |                        |                      |
| 4 <sup>00</sup>  |                        |                      |                        |                      |
| 5 <sup>00</sup>  |                        |                      |                        |                      |
| 6 <sup>00</sup>  |                        |                      |                        |                      |
| 7 <sup>00</sup>  |                        |                      |                        |                      |
| 8 <sup>00</sup>  |                        |                      |                        |                      |
| 9 <sup>00</sup>  |                        |                      |                        |                      |
| 10 <sup>00</sup> |                        |                      |                        |                      |
| 11 <sup>00</sup> |                        |                      |                        |                      |
| 12 <sup>pm</sup> |                        |                      |                        |                      |
| 1 <sup>00</sup>  |                        |                      |                        |                      |
| 2 <sup>00</sup>  |                        |                      |                        |                      |
| 3 <sup>00</sup>  |                        |                      |                        |                      |
| 4 <sup>00</sup>  |                        |                      |                        |                      |
| 5 <sup>00</sup>  |                        |                      |                        |                      |
| 6 <sup>00</sup>  |                        |                      |                        |                      |
| 7 <sup>00</sup>  |                        |                      |                        |                      |
| 8 <sup>00</sup>  |                        |                      |                        |                      |
| 9 <sup>00</sup>  |                        |                      |                        |                      |
| 10 <sup>00</sup> |                        |                      |                        |                      |
| 11 <sup>00</sup> |                        |                      |                        |                      |

# September 26 - October 02

|                  | Monday, September 26 | Tuesday, September 27<br>Haunted House Load-IN | Wednesday, September 28 |
|------------------|----------------------|--|-------------------------|
| 12 <sup>am</sup> |                      |  |                         |
| 1 <sup>00</sup>  |                      |  |                         |
| 2 <sup>00</sup>  |                      |  |                         |
| 3 <sup>00</sup>  |                      |  |                         |
| 4 <sup>00</sup>  |                      |  |                         |
| 5 <sup>00</sup>  |                      |  |                         |
| 6 <sup>00</sup>  |                      |  |                         |
| 7 <sup>00</sup>  |                      |  |                         |
| 8 <sup>00</sup>  |                      |  |                         |
| 9 <sup>00</sup>  |                      |  |                         |
| 10 <sup>00</sup> |                      |  |                         |
| 11 <sup>00</sup> |                      |  |                         |
| 12 <sup>pm</sup> |                      |  |                         |
| 1 <sup>00</sup>  |                      |  |                         |
| 2 <sup>00</sup>  |                      |  |                         |
| 3 <sup>00</sup>  |                      |  |                         |
| 4 <sup>00</sup>  |                      |  |                         |
| 5 <sup>00</sup>  |                      |  |                         |
| 6 <sup>00</sup>  |                      |  |                         |
| 7 <sup>00</sup>  |                      |  |                         |
| 8 <sup>00</sup>  |                      |  |                         |
| 9 <sup>00</sup>  |                      |  |                         |
| 10 <sup>00</sup> |                      |  |                         |
| 11 <sup>00</sup> |                      |  |                         |
|                  |                      |  |                         |
|                  |                      |  |                         |

| September 2011 |    |    |    |    |    |    | October 2011 |    |    |    |    |    |    |    |    |
|----------------|----|----|----|----|----|----|--------------|----|----|----|----|----|----|----|----|
|                | M  | T  | W  | T  | F  | S  | S            |    | M  | T  | W  | T  | F  | S  | S  |
| 36             |    |    |    | 1  | 2  | 3  | 4            | 40 |    |    |    |    |    | 1  | 2  |
| 37             | 5  | 6  | 7  | 8  | 9  | 10 | 11           | 41 | 3  | 4  | 5  | 6  | 7  | 8  | 9  |
| 38             | 12 | 13 | 14 | 15 | 16 | 17 | 18           | 42 | 10 | 11 | 12 | 13 | 14 | 15 | 16 |
| 39             | 19 | 20 | 21 | 22 | 23 | 24 | 25           | 43 | 17 | 18 | 19 | 20 | 21 | 22 | 23 |
| 40             | 26 | 27 | 28 | 29 | 30 |    |              | 44 | 24 | 25 | 26 | 27 | 28 | 29 | 30 |
|                |    |    |    |    |    |    |              | 45 | 31 |    |    |    |    |    |    |

|                  | Thursday, September 29<br>Haunted House Load-IN | Friday, September 30<br>HAUNTED HOUSE OPENS | Saturday, October 01<br>Haunt? - End Sometime between 10/31 + 11/6 | Sunday, October 02<br>Last Day of Crew Contracts |
|------------------|---|---|--|--|
| 12 <sup>am</sup> |   |   |  |  |
| 1 <sup>00</sup>  |   |   |  |  |
| 2 <sup>00</sup>  |   |   |  |  |
| 3 <sup>00</sup>  |   |   |  |  |
| 4 <sup>00</sup>  |   |   |  |  |
| 5 <sup>00</sup>  |   |   |  |  |
| 6 <sup>00</sup>  |   |   |  |  |
| 7 <sup>00</sup>  |   |   |  |  |
| 8 <sup>00</sup>  |   |   |  |  |
| 9 <sup>00</sup>  |   |   |  |  |
| 10 <sup>00</sup> |   |   |  |  |
| 11 <sup>00</sup> |   |   |  |  |
| 12 <sup>pm</sup> |   |   |  |  |
| 1 <sup>00</sup>  |   |   |  |  |
| 2 <sup>00</sup>  |   |   |  |  |
| 3 <sup>00</sup>  |   |   |  |  |
| 4 <sup>00</sup>  |   |   |  |  |
| 5 <sup>00</sup>  |   |   |  |  |
| 6 <sup>00</sup>  |   |   |  |  |
| 7 <sup>00</sup>  |   |   |  |  |
| 8 <sup>00</sup>  |   |   |  |  |
| 9 <sup>00</sup>  |   |   |  |  |
| 10 <sup>00</sup> |   |   |  |  |
| 11 <sup>00</sup> |   |   |  |  |